

# PERMANENT INSTALLATION GUIDE

1. Attach P/N 32234 to blade valve;
2. If necessary, cut a Ø3.325 diameter hole in bottom of compartment;
3. Glue one sealed swivel P/N 32237 to P/N 32234;
4. Glue sleeve P/N 32236 to sealed swivel P/N 32237;
5. Cut one Ø3.125 OD tube P/N 32247 to length that will allow the top of second sealed swivel P/N 32237 to be 1" below bottom of RV as shown;
6. Glue pre-cut tube P/N 32247 to sleeve P/N 32236;
7. Glue elbow P/N 32243 to tube P/N 32247;
8. Glue second sealed swivel P/N 32237 to elbow P/N 32243;
9. Glue second elbow P/N 32243 to sealed swivel P/N 32237;
10. Glue sleeve P/N 32235 to elbow P/N 32243;
11. Glue P/N 32246 to sleeve P/N 32235, making sure pins on P/N 32246 are vertical and horizontal as shown;
12. Attach telescoping assembly P/N 32238;
13. Cap telescoping assembly with P/N 32220;

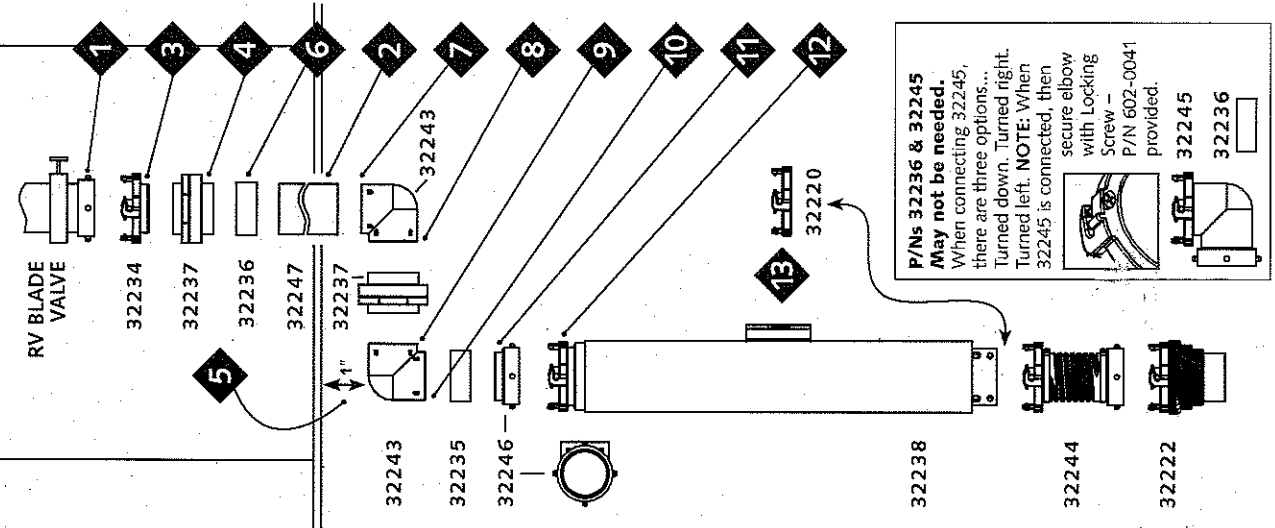
## TO USE

1. Telescope assembly to sewer port;
2. Uncap;
3. Screw sewer port adapter P/N 32222 in sewer port;
4. Attach P/N 32244 hose assy to sewer port adapter P/N 32222 and then to telescoping assembly P/N 32238 and then dump tanks.

## TO STORE AFTER USE

1. Reverse steps 1-4

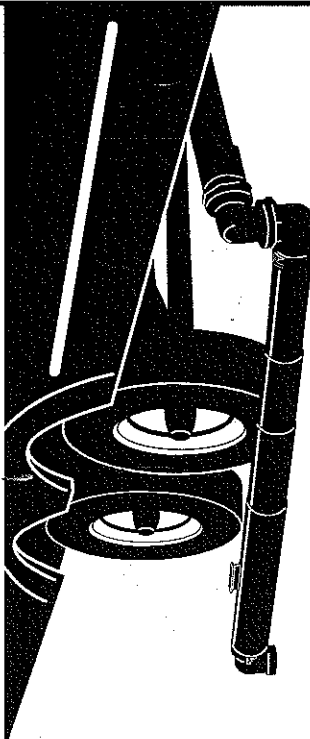
RV SEWER PORT



**P/Ns 32236 & 32245 May not be needed.** When connecting 32245, there are three options... Turned down. Turned right. Turned left. **NOTE:** When 32245 is connected, then secure elbow with Locking Screw - P/N 602-0041 provided.

# barker. Swing Free

RV DELUXE DUMPING SYSTEM



**A PERFECT DESIGN!** Swing Free installs on most RV's and features a telescoping PVC drain that reaches up to eight feet\* away! And the double sealed swivel hook up allows for a "swing-free" motion (360°) that makes emptying at dump station or attaching to a sewer riser a breeze.

**barker** MANUFACTURING CO.

730 E. Michigan Ave., P.O. Box 460,

Battle Creek MI 49016-0460

269-965-2371 • fax: 269-965-2389

www.barkermfg.com

PATENT PENDING

FORM 32249

TO SEWER PORT

\* 24" Optional Extensions Available (P/N 32291).